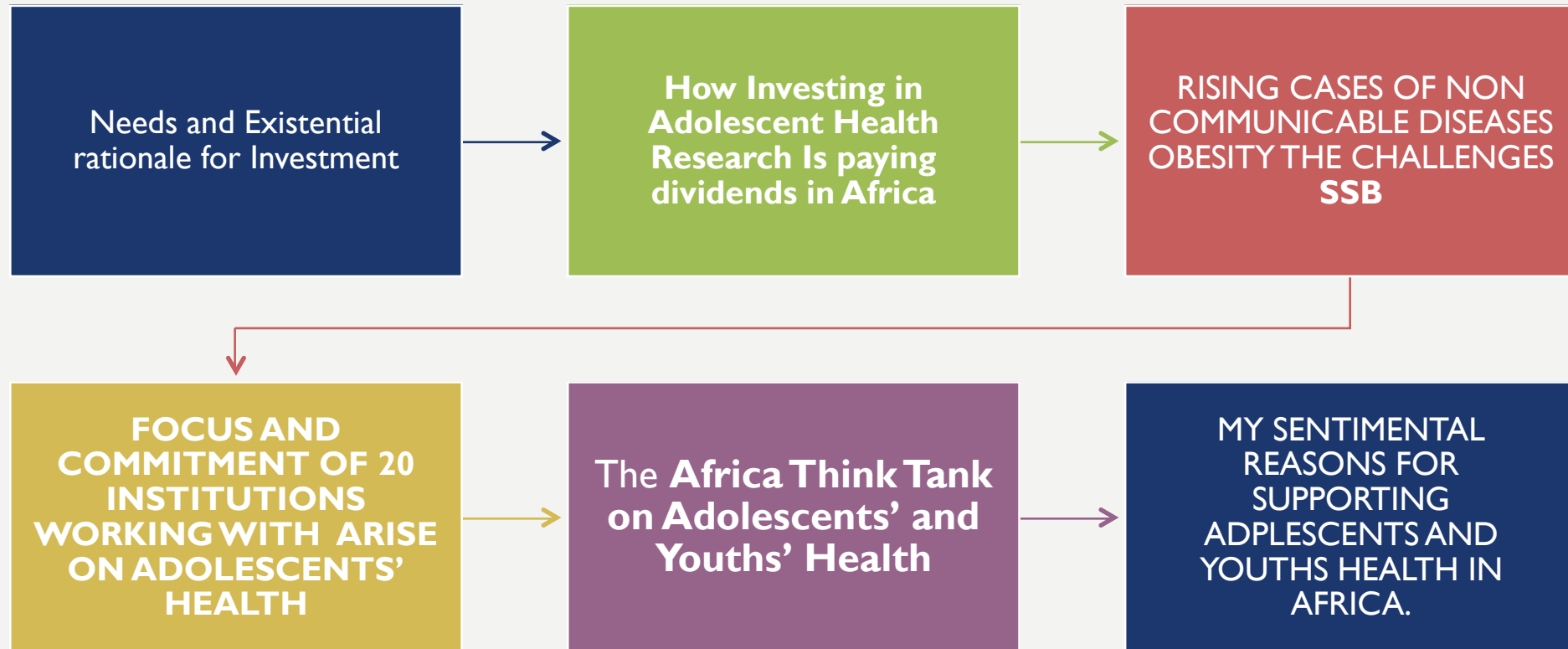


**SOWING SEEDS FOR CHANGE: THE POLICY
IMPLICATIONS OF INVESTING IN ADOLESCENT
HEALTH AND
NUTRITION RESEARCH**

Ayoade MJ Oduola
University of Ibadan Research Foundation
January 19, 2024
Symposium of the AAPH, Tanzania

FOCUS OF PRESENTATION

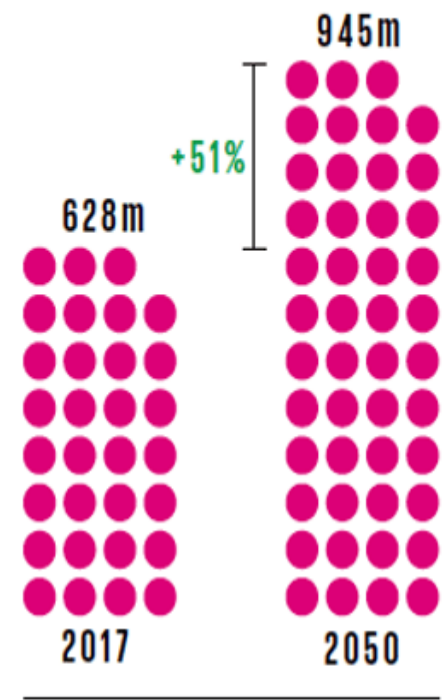


WHY MAKE THE INVESTMENT

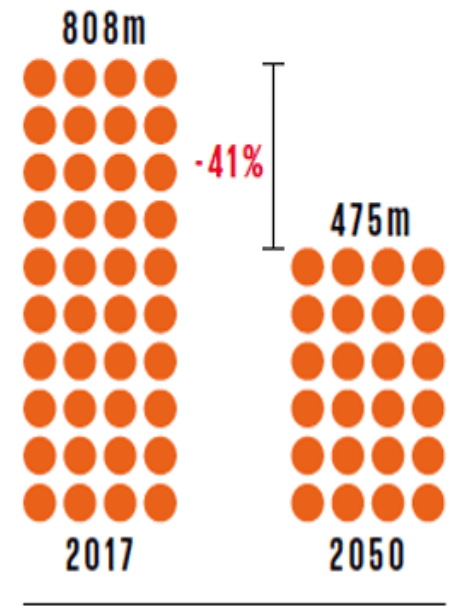
3 Major Reasons for investing in Adolescents

THE REASONS ARE SELFISH REASONS!!

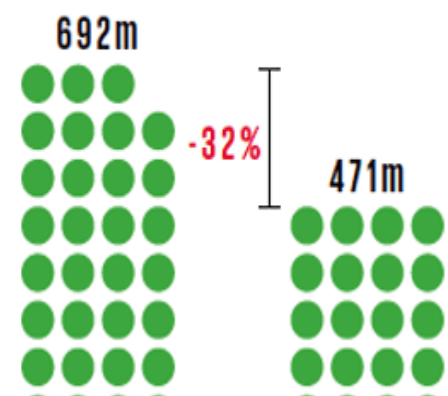
○ Equals 20 million people aged 0-24 years



Sub-Saharan Africa

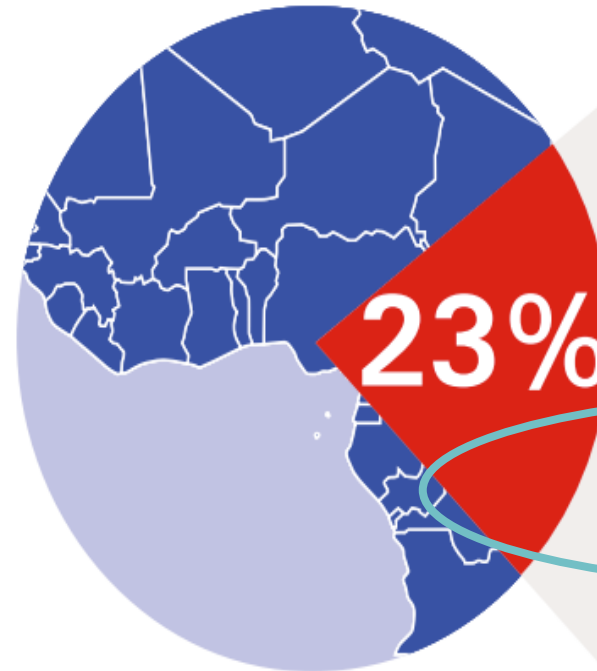


South Asia



AFRICA IS THE ONLY REGION WHERE ADOLESCENTS POPULATION IS INCREASING

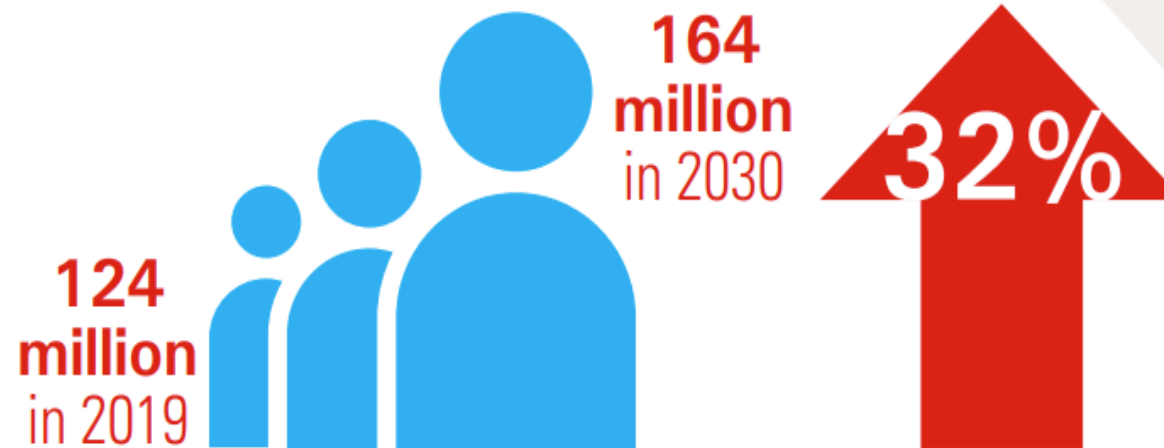
West and Central Africa: Key figures about the adolescent population



Children aged 10-19,
constituted nearly 23% of
the population in 2019

**THE LARGEST
PROPORTION OF ANY
REGION GLOBALLY**

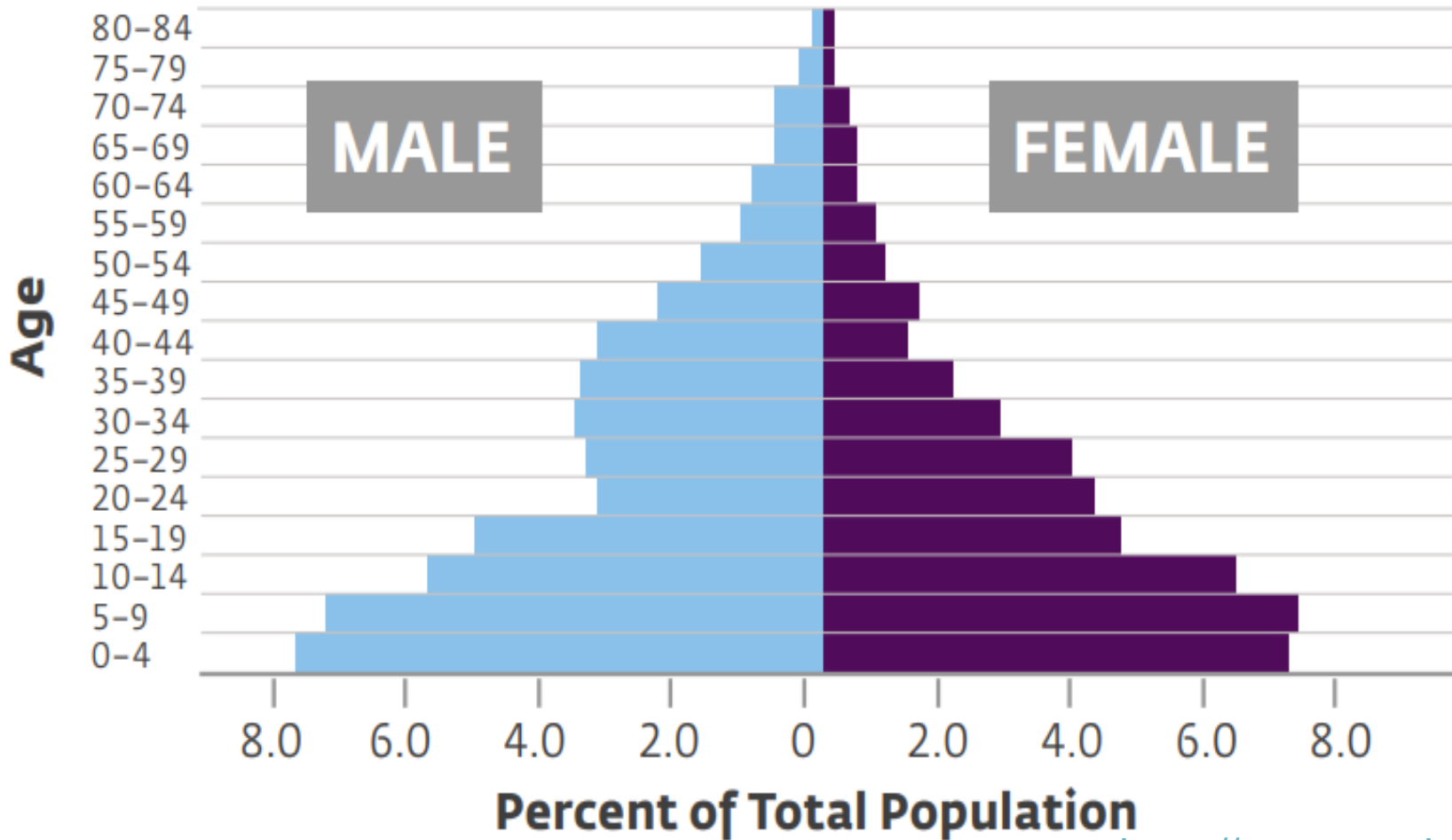
**THE NEEDS AND
EXISTENTIAL
RATIONAL TO
INVEST IN
ADOLESCENTS
AND YOUTHS
HEALTH**



Between 2019 and 2030,
the population aged 10-19
**is expected to
grow by 32%,**
from 124 million
to 164 million.

Nigeria has a large youth population

Population Age-Sex Pyramid: PMA2017/Nigeria



More than 1 in 2 people in Nigeria are under 24 years of age.

More than 1 in 4 people in Nigeria are adolescents (age 10-19 years).

THE NEEDS AND
EXISTENTIAL
RATIONAL TO
INVEST IN
ADOLESCENTS
AND YOUTHS
HEALTH

BABIES
MAKING
BABIES



of 18-24 year
old **rural**
females are
married by 18



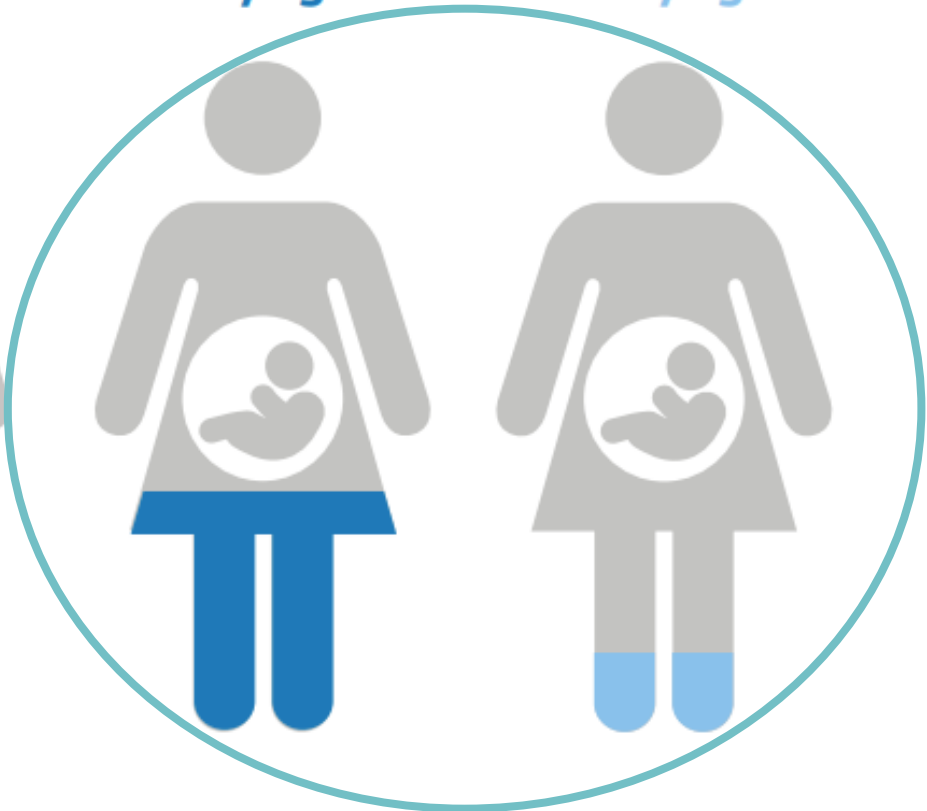
of 18-24 year
old **urban**
females are
married by 18



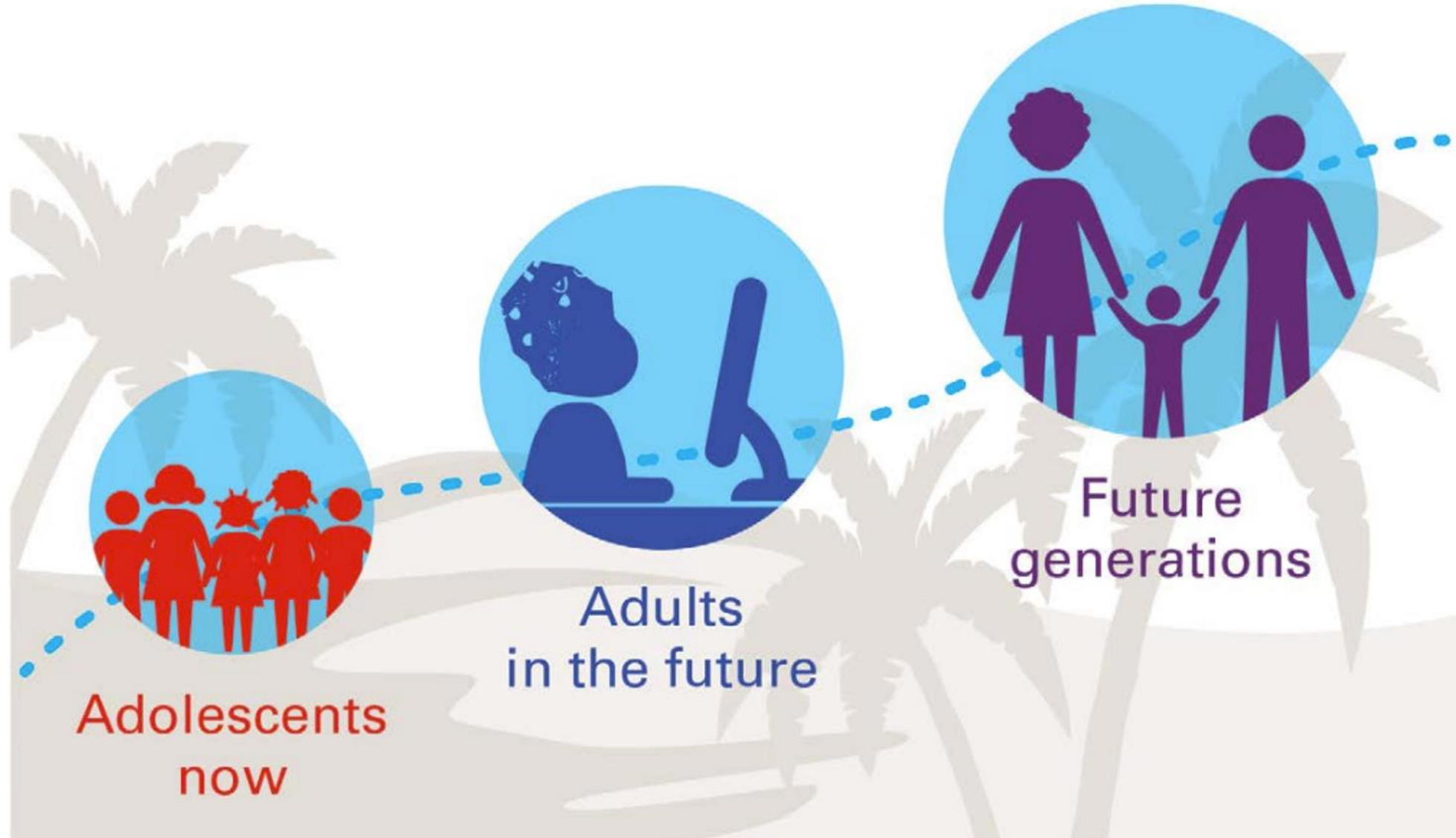
of 18-24 years
old **rural** females
have their **first
birth by age 18**



of 18-24 years old
urban females
have their **first
birth by age 18**



Investments in adolescent girls bring a triple benefit



- DIVIDENDS OF INVESTING IN Adolescents and Youths: Health Research



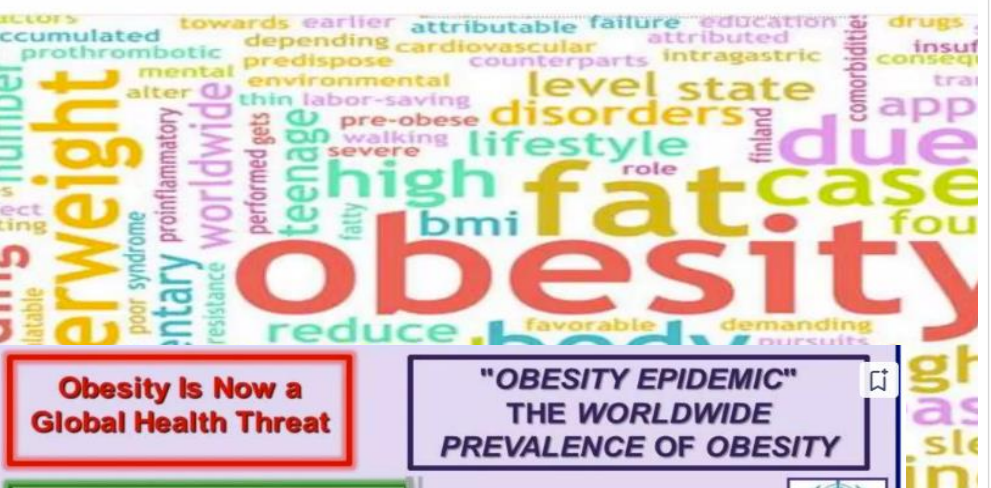


COMPELLING RATIONAL TO SOW THE SEED

CHALLENGES OF NON COMMUNICABLE DISEASES IN AFRICA

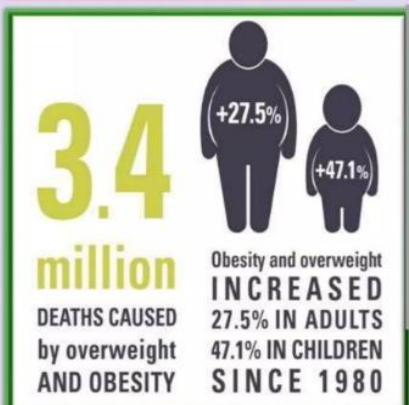
NON COMMUNICABLE DISEASES: THE RACE IS ON IN AFRICA

abnormal or excessive fat accumulation of adipose tissue, to the extent that health may be impaired."

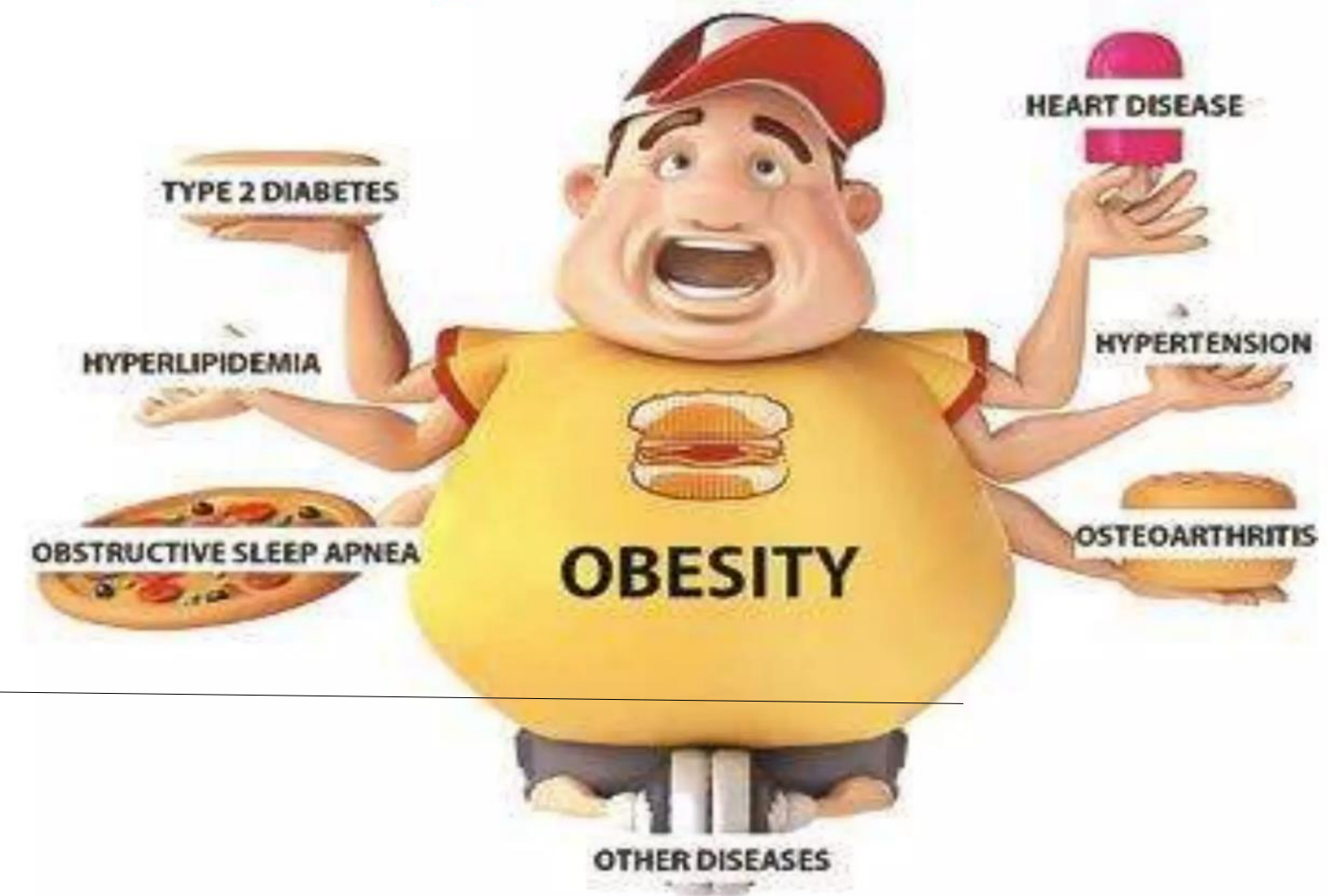


Obesity Is Now a Global Health Threat

"OBESITY EPIDEMIC" THE WORLDWIDE PREVALENCE OF OBESITY

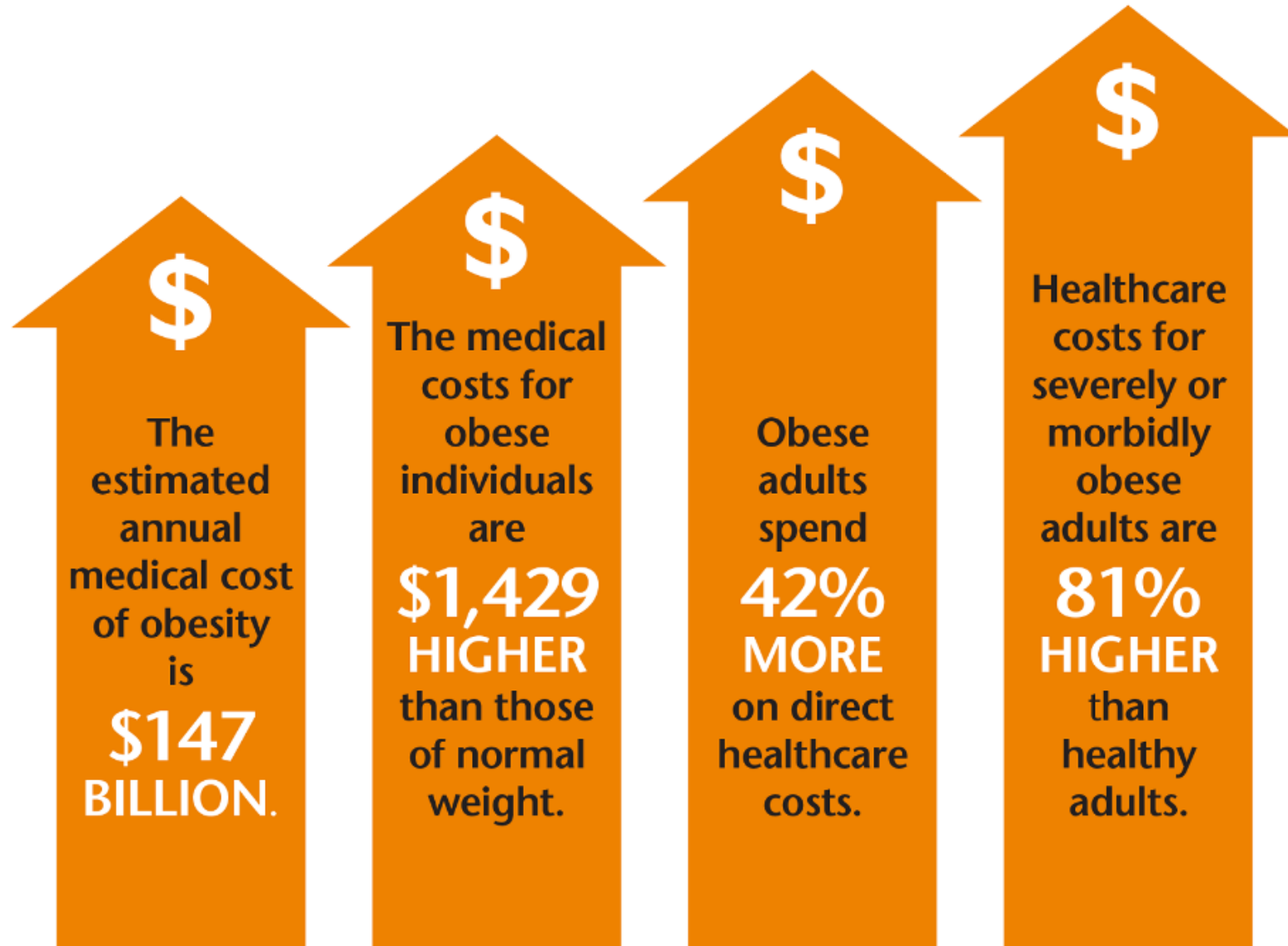


Impact on Health



Obesity Increases Medical Costs

Obesity is associated with job absenteeism, costing *over \$13 billion* in the United States annually⁷.





Lifestyle diseases pose new burden for Africa

Diabetes, cancer, heart and respiratory diseases will be the leading killers by 2030

BY ZIPPORAH MUSAU



Fighting NCDs

Raise taxes on alcohol and tobacco to finance public health

Enforce ban on alcohol advertising

Reduce salt in food products

Increase taxes on sugary drinks

Make essential drug therapies easily available

Encourage physical and other outdoor activities

Promote healthy diets, with lots of fruits and vegetables

IMPACT OF SSB TAXES: INTERNATIONAL CASE STUDIES- MEXICO

- Mexico introduced a volumetric SSB tax in 2014 –
- A tax of 1 peso per litre on SSBs. A price rise of about 11% for soft drinks, and a slightly smaller increase for other sweetened beverages.
- Reduced both purchases and consumption of SSBs in Mexico.
- By 2016, there was a 37% reduction in the total volume of SSBs purchased, compared to the year before the tax.
- It's predicted that over 10 years, the Mexican SSB tax would prevent 239,900 cases of obesity.
- Of these, 39% would be cases of obesity prevented in children. This drop in obesity is predicted to avoid 5,840 disability-adjusted life-years.

**USING SUGAR
SWEETENED
BEVERAGE
(SSB) TAX
FOR MORE
NEW
SOURCE
FOR HEALTH
FINANCING**



Country Director, PharmAccess Foundation, Njide Ndili, giving her welcome remarks at the policy dialogue titled, 'New Health Financing Approaches in Nigeria: Implementation of Sugar-Sweetened Beverage (SSB) Tax in Nigeria. Photo credit: Nigeria Health Watch

ARISE NETWORK OF
20 GLOBAL
PARTNERS ON
ADOLESCENTS AND
YOUTHS HEALTH

MAKING A
DIFFERENCE

Global Partners



Research Network for Design and Evaluation of Adolescent Health Interventions and Policies in Sub-Saharan Africa (DASH)



The Research Networks for Health Innovations in Sub-Saharan Africa (RHISSA) ARISE LED initiative of the German Ministry of Education and Research (BMBWF)

THINK TANK: SHAPING POLICY IMPLICATIONS OF INVESTING IN ADOLESCENT HEALTH AND NUTRITION RESEARCH

“Good science is the basis of good public health, but the challenge we face is to translate the best science into public policy”

*Gro Harlem Brundtland
former Director-General, WHO*



**INVESTING IN
TRANSLATIONS
OF BEST
SCIENCE FOR
PUBLIC HEALTH**

**THINK TANK
APPROACH**

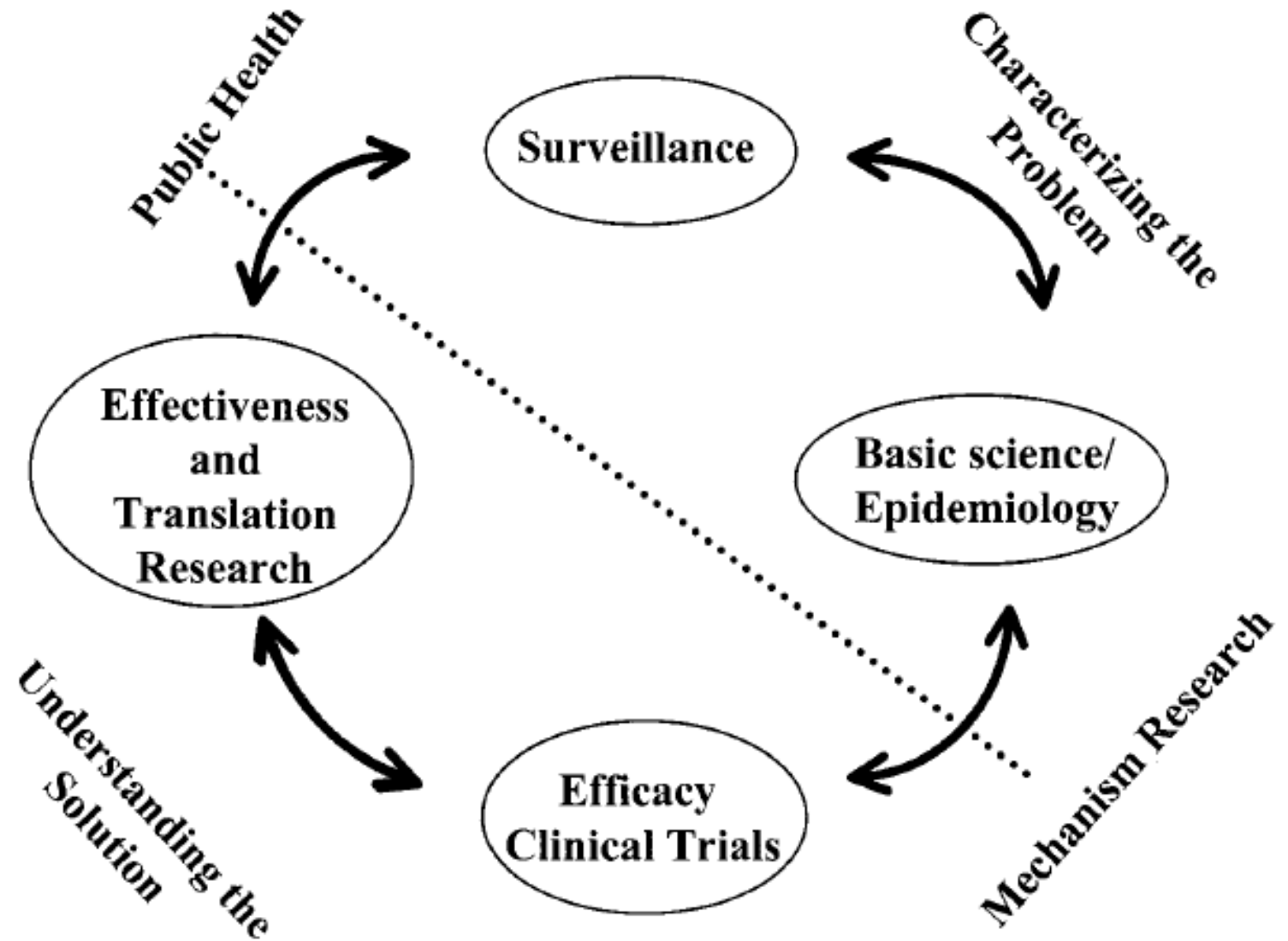
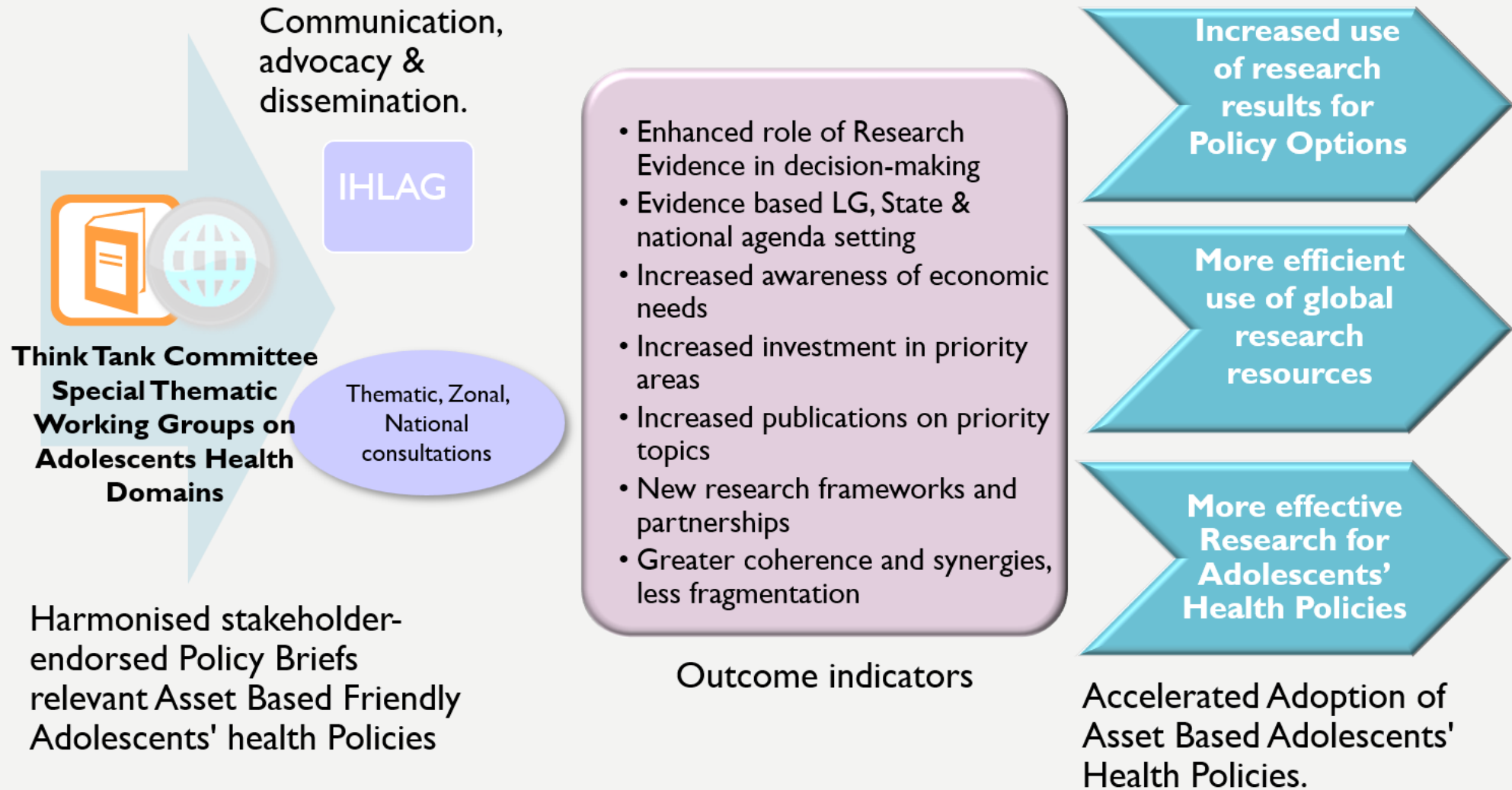


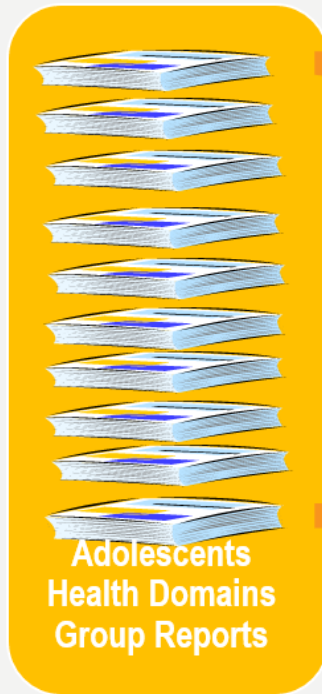
Figure 1—*Translation research in the context of other models of research.*

THINK TANK FOR CONSENSUS BUILDING & AGENDA FOR SUSTAINABLE POSITIVE ADOLESCENTS' HEALTH OUTCOMES



TOTAL COVERAGE TO FACILITATE UPTAKE OF POLICY OPTIONS BY ALL STAKEHOLDERS

Special Thematic Working Groups' Reports



Overview of research, assets, best practices for sustainable Asset Based Policy Options for Positive Adolescents Health Outcomes

Compilation of Policy Briefs from Think Tank:
Needs, Potential for Impact, Options for Action



Prepared and disseminated by **ARISE**

Peer reviewed articles



TARGETED STAKEHOLDERS FOR THINK TANK PRODUCTS: POLICY BRIEFS & IMPACT DEMONSTRATION PROJECTS TOWARDS PARADIGM CHANGE

Government decision-makers at Federal, State and Local Government

Scientists

Charities funding research

International agencies

Implementers of Economic Development Agenda

**Compilation of Policy Briefs from Think Tank:
Needs, Potential for Impact, Options for Action**



*Prepared and disseminated by
ARISE Network*

Functions:

Status report & Advocacy
Track progress towards
Paradigm change

PPPs and Private industries

Relevant NGOs

Civil society

Advocacy groups

Politicians

“comme on faist son lict, on le treuve”

1590

George Herbert 1640

James Kelly 1721

Joseph Crosby Lincoln 1908

GERIATRICS CARE TODAY IN AFRICA

“comme on faist son lict, on le treuve”

1590

As Stakeholders Your Perspectives Count



Agree on Asset based effective
Options on:

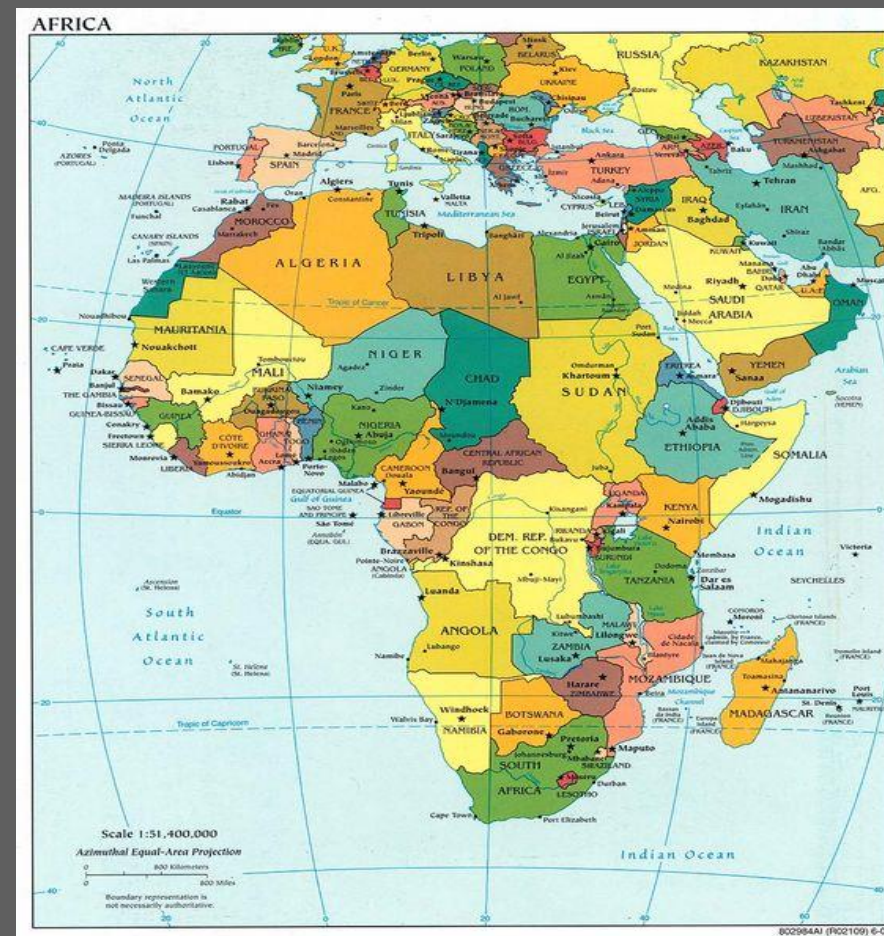
What the data show
Community Aspirations
Potential Impact

Future of Our Nation can be Assured

Align Adolescents' & Youths' needs and Assets to generate policy options



Demonstrate effectiveness of Policy options for Adolescents' & Youths' Health




AFRICA



**Can We Use Our Assets Effectively
to Drive Positive Outcomes for
Adolescents' and Youths'
Health in Africa?**

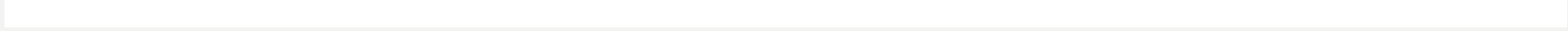


A woman with dark hair, wearing a red dress and a gold headband, is looking intently at a glowing white crystal ball. Her hands are positioned around the ball, with fingers slightly spread. The background is a solid blue color. A speech bubble is positioned to the right of her face, containing the text "I see a bright, flying future...".

I see a bright,
flying future...

Appreciation





Thank you